

HP FlexFabric 11900 Switch Series



Figure 1. HP FlexFabric 11900



Product overview

The HP FlexFabric 11900 Switch Series is a high performance data center aggregation switch that provides line-rate, high density 10GbE and 40GbE designed for cost-effective end of row (EoR) and small core deployments.

Product description

The HP FlexFabric 11900 Switch Series family includes an eight slot chassis with front-to-back airflow.

The HP FlexFabric 11900 Switch Series can scale up to 384 10GbE and 64 40GbE ports. The switch delivers up to 7.7 Tb/s switching capacity and 5.7 billion packets per second forwarding.

HP FlexFabric 11900 offers broad interface options including 10GbE and 40GbE with latency as low as 3 μ s.

The HP FlexFabric 11900 Switch Series is OpenFlow 1.3 ready and supports full layer 2 and 3 features and advanced features like Multitenant Device Context (MDC),¹ Transparent Interconnection of Lots of Links (TRILL), Shortest Path Bridging (SPB),² and Intelligent Resilient Framework (IRF) to build large, resilient switching fabrics.

The switch has enterprise-class resiliency, including fully redundant and hot swappable components.

Key features of HP 11908-V:

- High performance Clos based switching architecture
- 20 Rack Units (RU)
- Full layer 2 and layer 3
- Advanced features (MPLS, VPLS, QoS)

- IPv4, IPv6
- IRF
- Multipathing with TRILL, and SPB³
- DCB and FCoE convergence
- VEPA/EVB
- MDC⁴
- 5.7 billion packets per second throughput
- 7.7 Tb/s switch capacity
- 384 10GbE ports
- 64 40GbE ports
- 1-year hardware warranty with advance replacement and 10-calendar-day delivery (available in most countries)

Key advantages

The FlexFabric 11900 switch helps to simplify data center complexity along with network and storage convergence and reduced footprint, power, and cost.

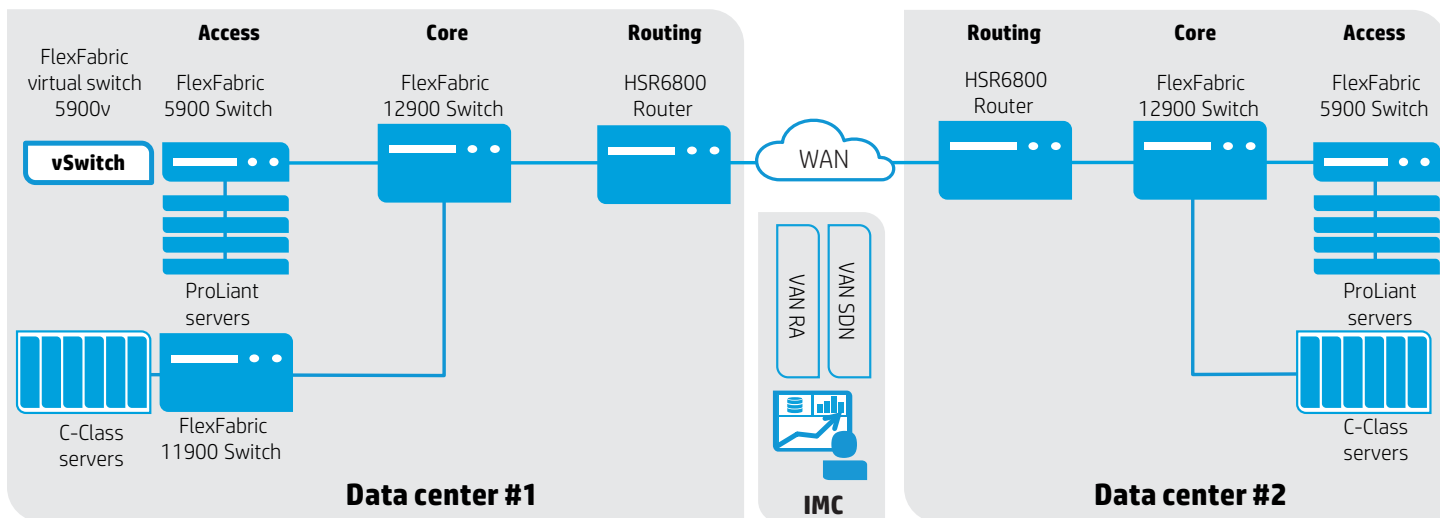
With front-to-back airflow, redundant and hot swappable management, power, fabric and cooling modules, the FlexFabric 11900 switch is an ideal switching platform for building very low latency, high performance, data center networks.

The switch offers broad interface options, high packet per second forwarding throughput, and wire-speed performance.

HP FlexFabric 11900 is designed with Comware version 7, a unified network operating system supported across all HP FlexNetwork products. Unlike competitive solutions, all the advanced features are supported consistently across our entire product line and do not require additional costly and complex licenses.

Figure 2. HP FlexFabric solution deployment

IMC single-pane-of-glass management



HP FlexFabric solution

HP FlexFabric provides a new architectural approach that offers simplified, scalable, and automated connectivity for virtualized compute, storage, and cloud services. This solution provides a common fabric that delivers end-to-end software-defined network services in the data center.

HP FlexFabric 11900 enables data center fabrics with greater reliability, flexibility, and scale by adding mature virtualization technology like IRF with standards-based protocols like TRILL and SPB.⁵

HP IRF is fully interoperable with TRILL and SPB⁶ and reduces the failure domain to increase overall resiliency. These features together simplify scale and deliver faster fail-over recovery time.

All HP FlexFabric products are fully managed by HP Intelligent Management Center (IMC), which provides single-pane-of-glass management.

The HP virtual application network framework helps customers realize the advantages of SDN sooner, and allows them to spend more time focused on their core business and less on managing their networks.

Availability


HP FlexFabric 11900 and select modules will be available by the end of June 2013. Contact your local sales representative for more information.

Learn more at
hp.com/go/flexfabric

^{5,6} Available by Q1 2014

Sign up for updates
hp.com/go/getupdated

   
Share with colleagues


Rate this document

